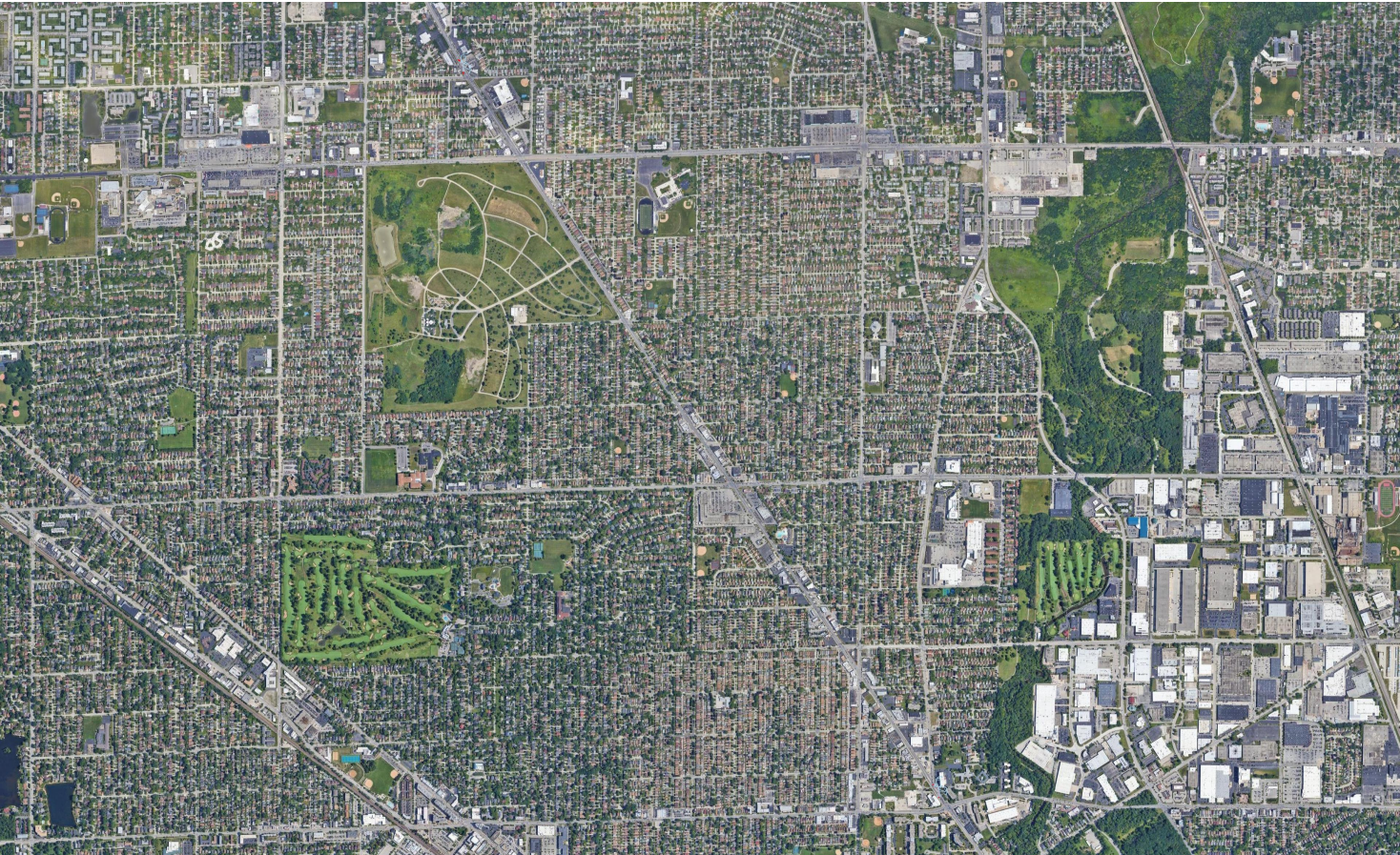


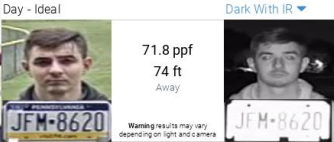
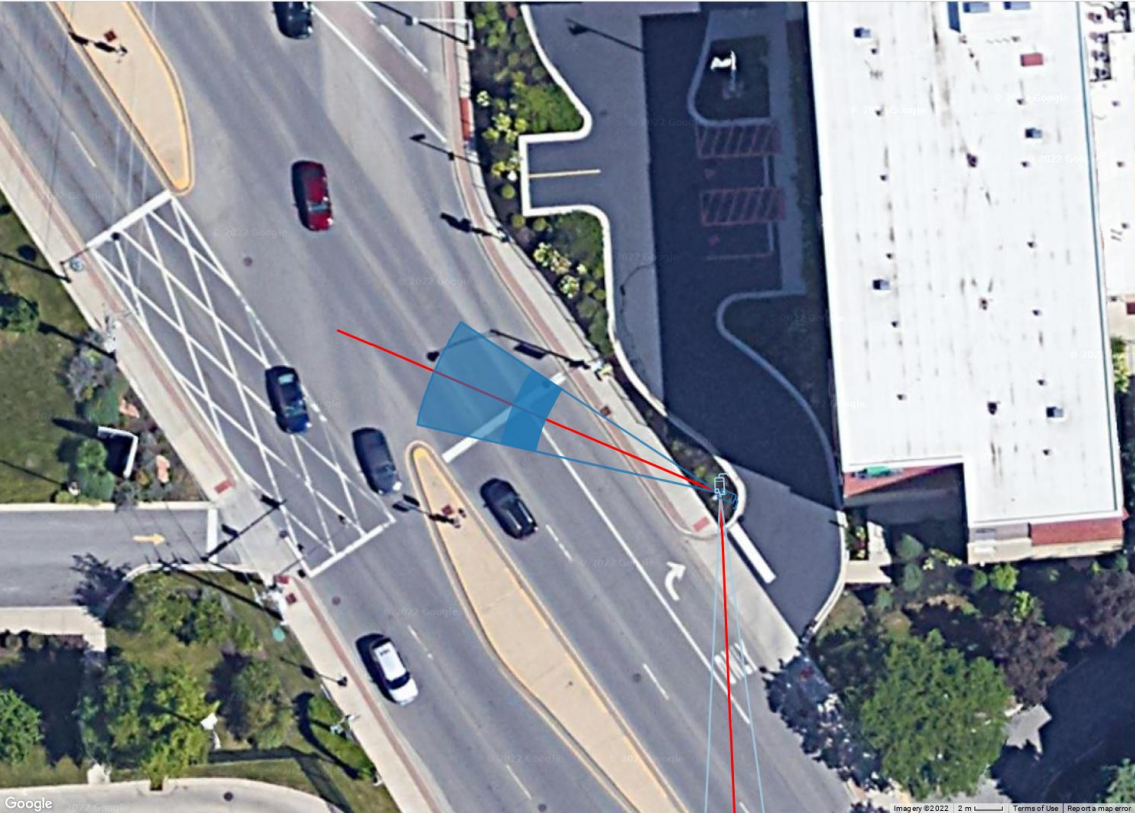
IPVM Camera Calculation | February 23, 2022

Overview



1.1 Milwaukee Ave NB @ Touhy Rd

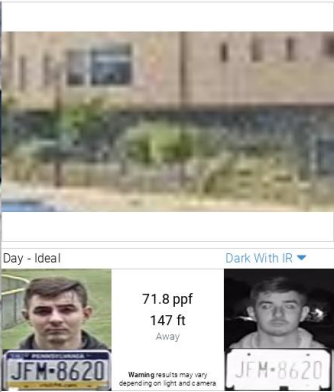
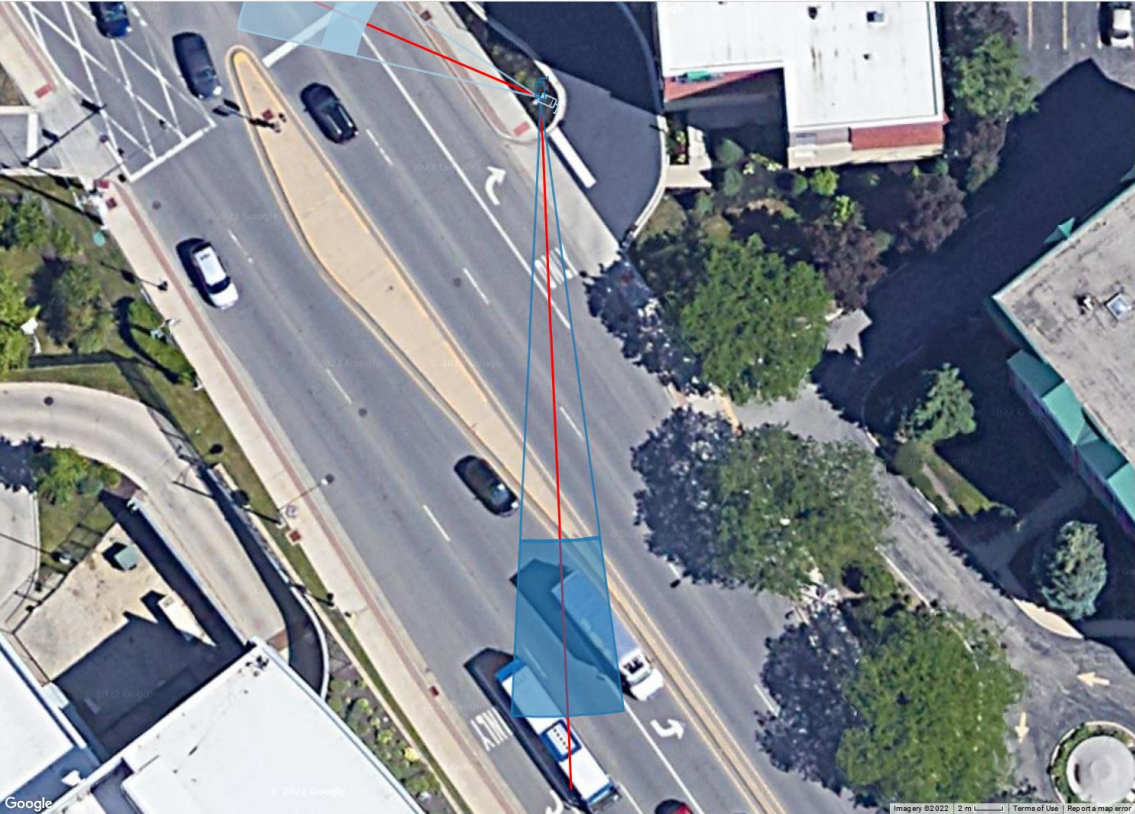
Model: Axis P1435-LE Resolution: 1080p
H AoV: 21° Distance: 74ft Width: 26.7ft PPF: 71.8
Imager: 1/2.8" Focal Length: 10 - 22mm Camera Height: 15.00ft Tilt: -12.79° Scene Height: 6.00ft



IPVM

1.2 Milwaukee Ave SB @ Touhy Rd

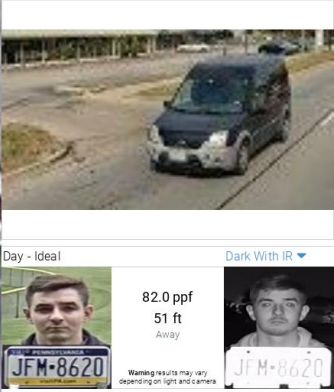
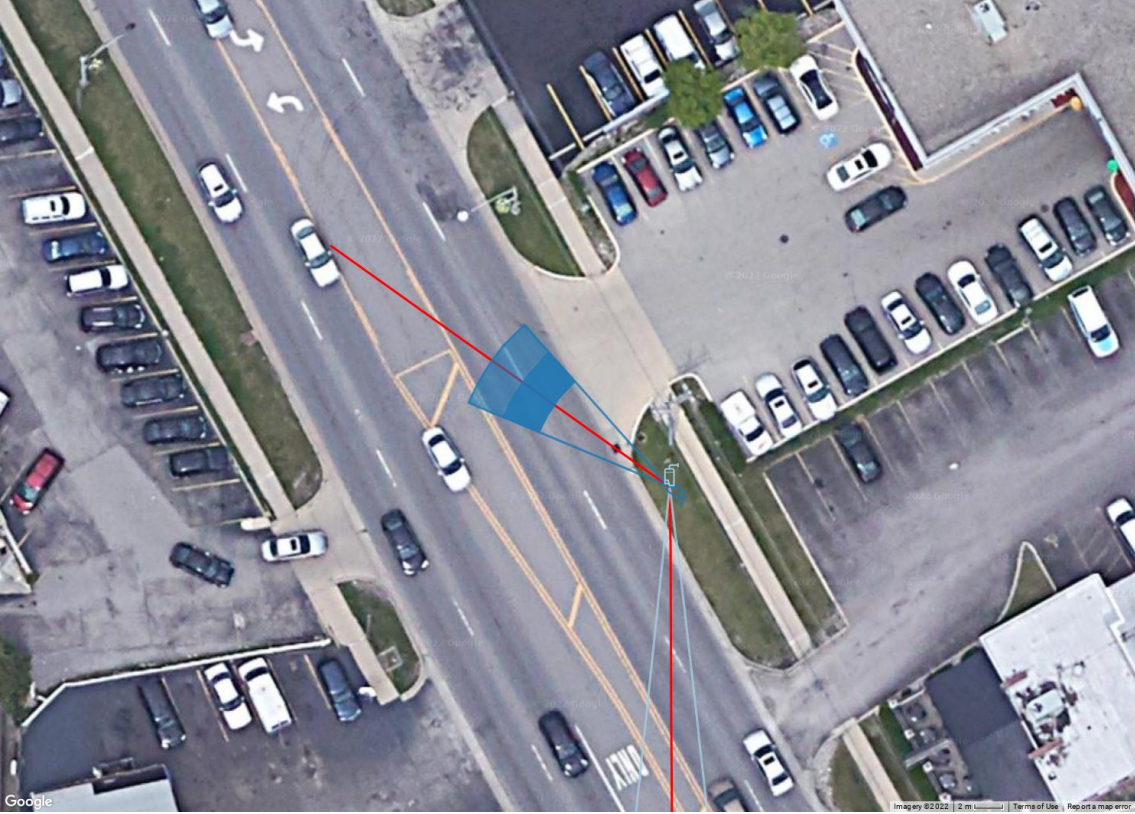
Model: Axis Q1700-LE Resolution: 1080p
H AoV: 10° Distance: 147ft Width: 26.7ft PPF: 71.8
Imager: 1/2.8" Focal Length: 18 - 137mm Camera Height: 18.00ft Tilt: -6.83° Scene Height: 8.00ft



IPVM

2.1 Milwaukee Ave NB @ Ballard Rd

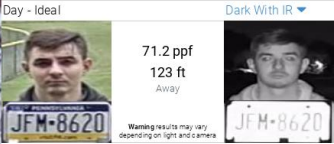
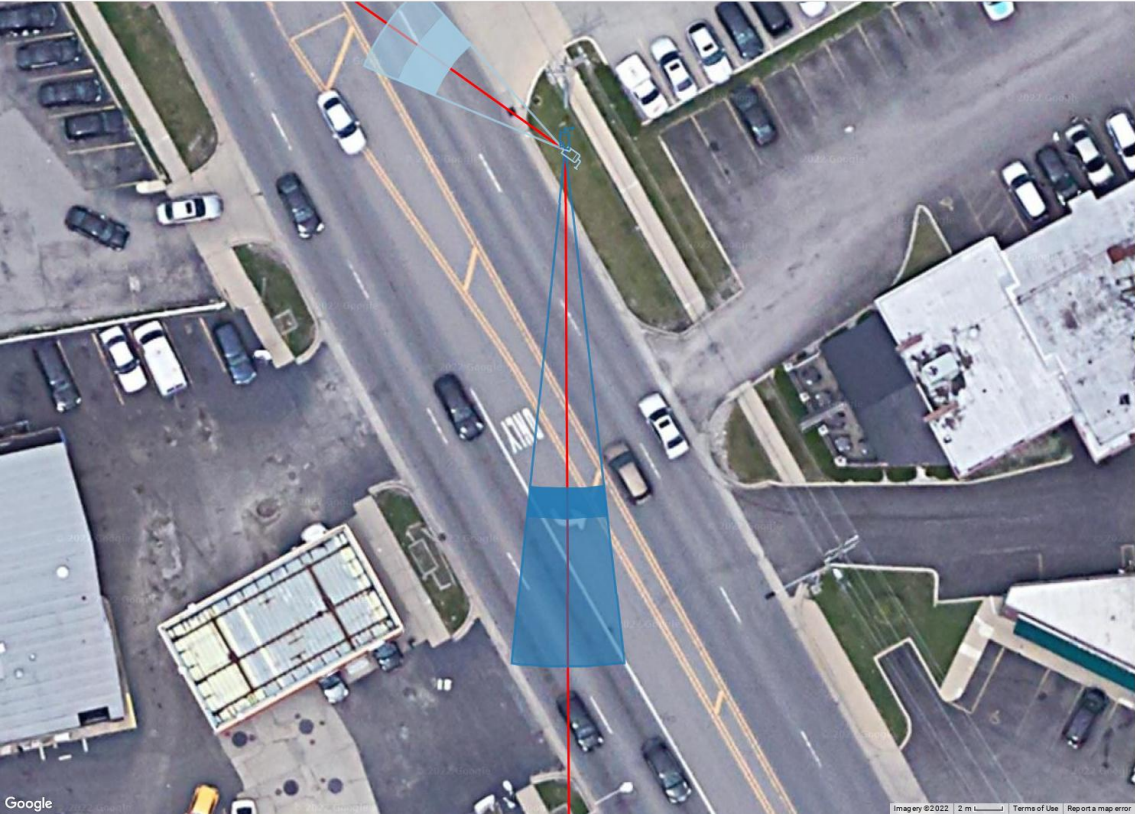
Model: Axis P1435-LE Resolution: 1080p
H AoV: 26° Distance: 51ft Width: 23.4ft PPF: 82.0
Imager: 1/2.8" Focal Length: 10 - 22mm Camera Height: 15.00ft Tilt: -17.16° Scene Height: 6.00ft



IPVM

2.2 Milwaukee Ave SB @ Ballard Rd

Model: Axis Q1700-LE Resolution: 1080p
H AoV: 13° Distance: 123ft Width: 27.0ft PPF: 71.2
Imager: 1/2.8" Focal Length: 18 - 137mm Camera Height: 18.00ft Tilt: -9.09° Scene Height: 6.00ft



IPVM

This presentation is an output of the IPVM Camera Calculator but is the work product of the individual who created it. IPVM does not guarantee nor warranty the work therein nor its implementation. Issues that may impact actual performance include but are not limited to lighting conditions, lens quality, and compression level.